

120°41'38"W

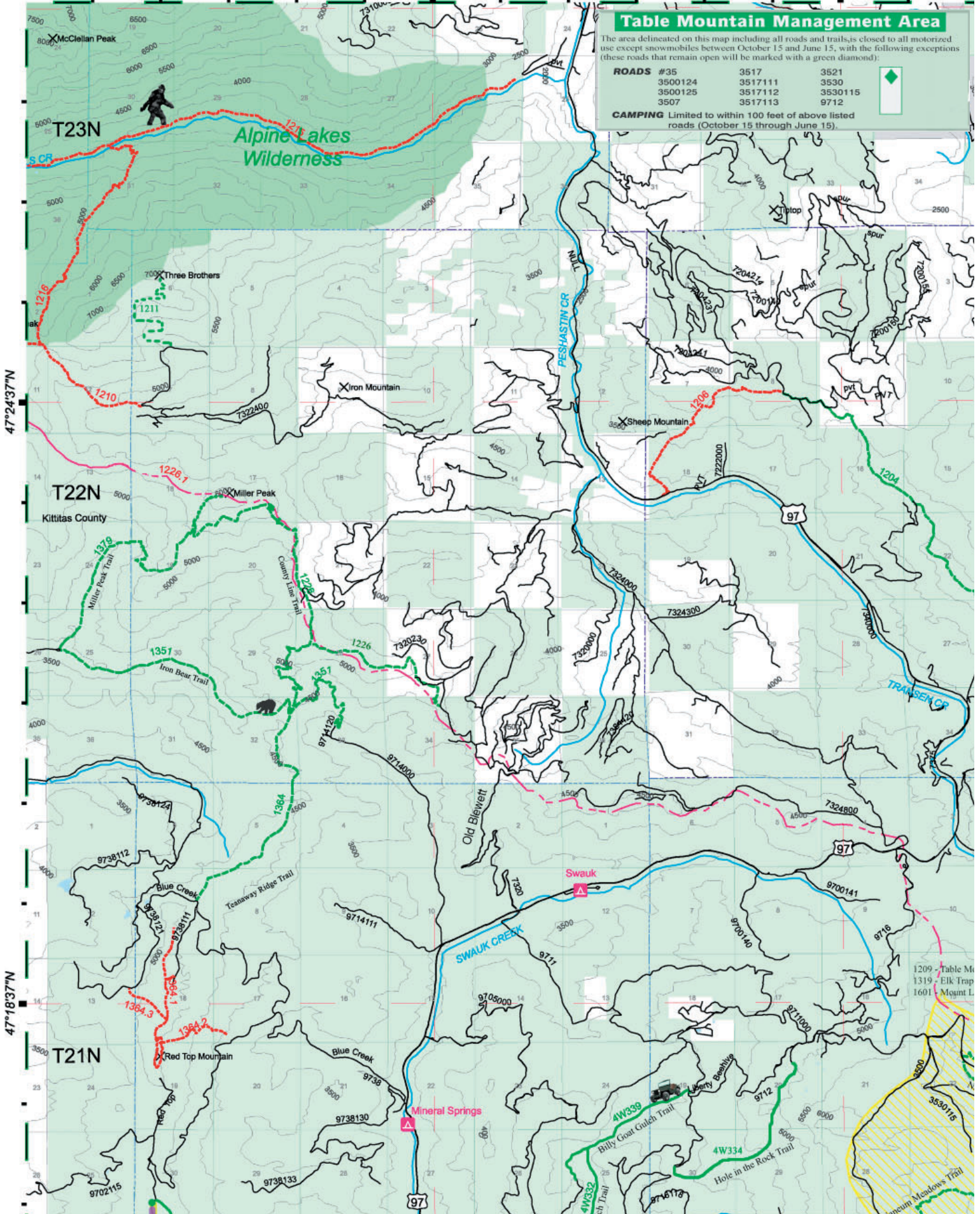
120°35'38"W

Table Mountain Management Area

The area delineated on this map including all roads and trails, is closed to all motorized use except snowmobiles between October 15 and June 15, with the following exceptions (these roads that remain open will be marked with a green diamond):

ROADS	#35	3517	3521
	3500124	3517111	3530
	3500125	3517112	3530115
	3507	3517113	9712

CAMPING Limited to within 100 feet of above listed roads (October 15 through June 15)



1 Mile

1209 - Table M
 1319 - Elk Trap
 1601 - Mount L